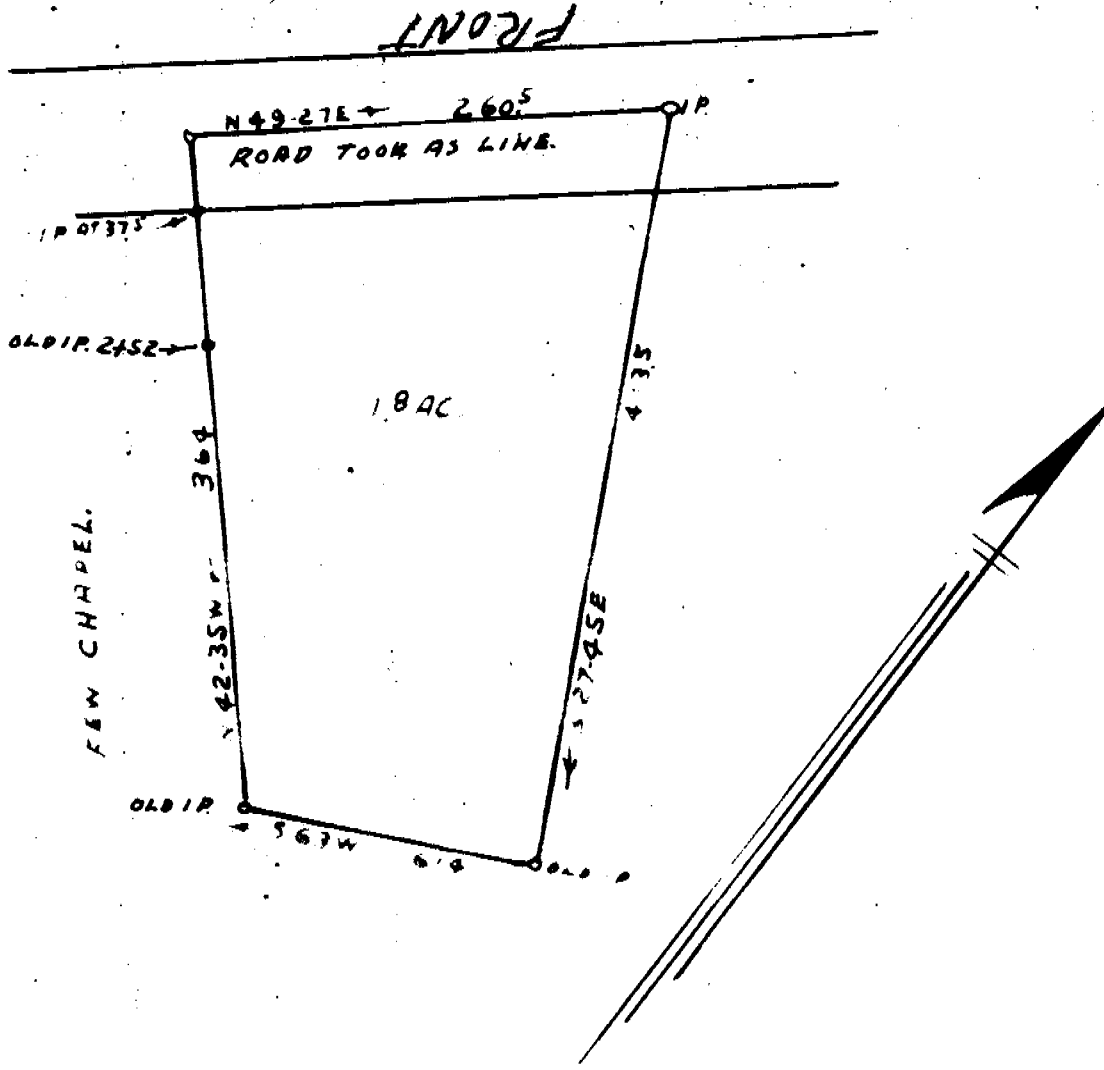


2



LAND SURVEY FOR
 W. H. CAMPBELL: GYVILLE, CO. S. C.,
 1-28-1959 1"=100' PART VOL. 239-PG. 118.
 J G BRUCE REG. SUR.

Recorded March 4, 1959 at 10:31 A. M. #22854

Carroll, Harold

Surveyed by J. G. Bruce, Reg. Sur., on 1-28-1959.